



### Spindle connection

standard connection for all attachments and accessories

### Motor

powerful, durable

### Lock-on button

protection against accidental fixing

### Dust extraction\*/ Water supply\*

integrated

### Metal gearbox

long service life

### PUR-construction site cable\*

for heavy duty use

### Additional handle

variable adjustment on the collar

• **Mechanical safety clutch\***  
protection of the user

• **Electronic**  
soft start\*  
overload indication\*  
temperature control\*  
over current cut-off\*  
constant speed\*  
service indicator\*

\* not present on all models

## CHARACTERISTICS OF DIAMOND CORE DRILLS

With a wide range of different diamond core drills EIBENSTOCK offers tailored solutions for diamond core drilling between diameter 3.5 and 450 mm. The comprehensive machine, drill and accessory program is not only convincing plumbers and electricians but also other craftsmen all around the construction.

The **PowerLine**-Series is a specially designed machine concept for series drilling and continuous use in the construction and civil engineering.

## ▶▶ Diamond wet core drill END 1550 P

### The versatile model for up to Ø 68 mm holes

#### USE:

- Wet drilling in natural stone, tiles, ceramic, porcelain, stoneware, glass, reinforced concrete
- Blind or through holes for fitting connectors as well as gravestones and worktops
- Anchor holes
- Mounting holes for switches
- Tilers, stonemasons and installation companies

#### FEATURES:

- Electronic – soft start, speed regulation and constant speed, temperature control and over current cut-off
- Stainless steel spindle
- Integrated water supply
- Water supply control – on/off, stepless quantity control
- Quick-change system
- Can be used with drill rig to keep stationary
- Centering device (accessory)



speed regulation



water supply control

SPECIFICATIONS	END 1550 P
Power input	1500 W
Rated voltage	230 V ~
Rated speed	1800-4400 rpm
Drilling diameter	6-68 mm
Spindle connection	G1/2" female
Collar diameter	53 mm
Weight	3.6 kg
Order no.	03114000

Supplied in a case incl. quick changing adapter and adapter M 12 x 1.5 m - G1/2"





## Diamond wet core drill END 1550 P – ACCESSORIES

### FOR WET DRILLING

#### Material



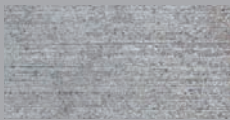
for natural stone, tiles



for natural stone



for reinforced concrete



for concrete

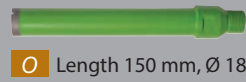


for natural stone, tiles

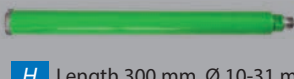
#### Diamond wet drill bits R $\frac{1}{2}$ "



**N** Length 40 mm, Ø 22-68 mm



**O** Length 150 mm, Ø 18-51 mm



**H** Length 300 mm, Ø 10-31 mm

#### Diamond wet full drill bits



**L** Length 60 mm, Ø 3.5-12 mm

**K** Length 150 mm, Ø 6.0-12 mm

#### Diamond wet hollow drill bits



**M** Length 60 mm, Ø 6-18 mm

#### Spare seals for centering device

**35842000**

#### Centering device with water collection (Gardena-Connector) max. Ø 30 mm

**35836000**

#### Quick change adapter

G $\frac{1}{2}$ " - G $\frac{1}{2}$ "  
**38004000**

#### Quick change top

**38006000**

#### Adapter

M 12 x 1.5 m - G $\frac{1}{2}$ "  
**35122000**



**Water suction hose  
WR 82**

**3587R000**



**Centering device  
with drilling template**

**3583A000**



#### Industrial vacuum cleaner

DSS 25 A **09915000**

DSS 50 A **09916000**

DSS 35 M iP **09919000**



#### Water tank

5 l plastic, incl. 2.5 m hose  
with Gardena-Connector

**35811000**

10 l metal, incl. 3.5 m hose  
with Gardena-Connector

**35812000**

**H K L M N O** Diamond drill bits see page 56



**Sharpening block**  
200 x 100 x 50 mm

**35910000**



**3 Spare seals**  
for quick change adapter

**35125000**



**Guide ring for centering device**  
Please name order no. + Ø!

**358400 ...** + 06, 08, 10, 12, 13, 14, 15, 16, 18, 20, 21, 22, 24, 25, 28, 30 mm



#### Drill rig BST 90

**09629000**

#### Drill rig BST 50 V

**09645000**

see page 44